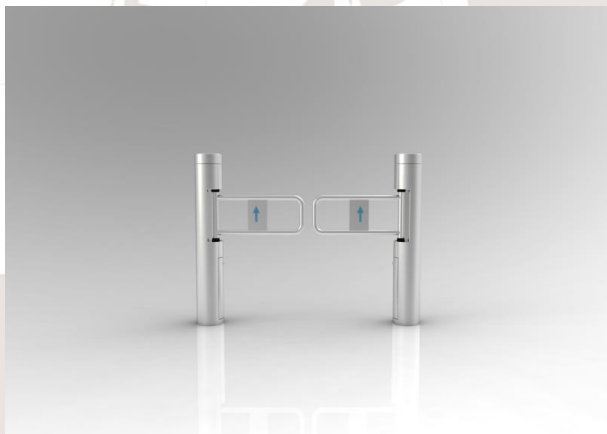


Cylinder Swing Gates

Model: NW-CY-01 with U-Bar

Dimension: D168mm*H1020mm



FEATURES

- Anti-Pinch mechanical structure, anti-bumps function, when the swing arm reset process meet resistance, within a limited time automatically stops the motor, the default delay after the reset again (until reset), and the force is very small ($\leq 2\text{Kg}$)
- With automatic reset function, after the gate opening, within a specified period no entry, the system will automatically cancel the user's access permission
- Adjustable normally open or normally closed, to meet the different specification
- Compatible with a most reader device, integrate via dry contact signal
- Unidirectional or bidirectional control of personnel access
- Remote control and management by the management computer
- Fail-Safe mode to meet fire safety requirements
- Optional with Side-Support Stands

Technical Parameters

- Material 304/316 Stainless Steel Hairline Finishing
- IP Rating: 54
- Net Weight: 60kg
- Panel: Stainless Steel U-Bar
- Through-put: 30-35 person/min
- Power: 230VAC 50Hz

